

FIRMWARE UPGRADE MANUAL

BAUDISCH SIP DOORMODULE PLUS/MAXI/ECO
SIP RELAYMODULE MAXI/ECO
DOORCONTROLLER 600

1.IMPORTANT INFORMATION

Necessary information is highlighted. Anything further serves for troubleshooting and understanding the device.

The firmware update contains 2 parts.

DSP firmware (update via web interface) and AVR firmware (update via our tool SIP Remote Control).

Here in this example you can see the start page of a SIP DoorModule Plus with DSP firmware V8.6 and AVR firmware 3.5



You can find your software package for updates on the Baudisch website.

<http://www.baudisch.com/downloads#firmware>

The contents of the package should look like this after extracting them from the .zip file:

Name	Änderungsdatum	Typ	Größe
20151024_SIP_Control.exe	08.07.2016 10:00	Anwendung	448 KB
20160616_V35_SIP_DUPLM_BootHex.hex	16.06.2016 10:35	HEX-Datei	229 KB
Baudisch_TuermodulPlus_GN2MK_DSP_de_V86.bin	16.06.2016 13:55	BIN-Datei	640 KB

The package includes our tool SIP Remote Control (necessary for AVR updates), an AVR firmware .hex file and a DSP firmware .bin file.

Should your package include instructions older than Jul 1st 2016 as well, feel free to ignore them.

1.1 Warranty und Support

In most cases a simple DSP firmware update via web interface is sufficient to enable a new feature.

But sometimes those new features potentially demand different AVR Parameters. Thus Baudisch Intercom can't guarantee that all features stay the same after an update.

Any kind of configuration via SIP Remote Control, for example changes to the Light relay parameter, needs to be done again since those are lost after a complete Firmware Update.

Generally speaking, the AVR firmware should be updated **before** the DSP firmware update.

This can lead to temporary problems until the DSP firmware is updated as well.

FIRMWARE UPGRADE MANUAL

BAUDISCH SIP DOORMODULE PLUS/MAXI/ECO
SIP RELAYMODULE MAXI/ECO
DOORCONTROLLER 600

We recommend to reset the device to factory settings after an update to ensure the web interface module runs properly. This isn't necessary and the module should work regardless in case you don't want to lose your current configuration.

If any problems occur, please contact support@baudisch.com

2. PREPARATION

First of all you need to connect SIP Remote Control and your module.

There is no installation required, simply run the .exe from the folder. Disabling your Firewall and Antivirus temporarily might be necessary in most cases (about 30 min). The module and your computer should be within the same subnet, ideally connected to the same switch as well.

Source-IP	Status	Parameter	BCC	Seq
192.168.128.79	0x4C - Login OK	[...]	0x56	0x47
192.168.128.79	0x0A - System idle - V8.6/V3.5 (V5.9)	[...]	0x50	0x48
192.168.128.79	0x14 - Device ID/Name	KSFEnganghaus 1	0x54	0x49
192.168.128.79	0x0A - System idle - V8.6/V3.5 (V5.9)	[...]	0x5A	0x4B
192.168.128.79	0x14 - Device ID/Name	KSFEnganghaus 1	0x5E	0x4C
192.168.128.79	0x0A - System idle - V8.6/V3.5 (V5.9)	[...]	0xAA	0x51
192.168.128.79	0x4C - Login OK	[...]	0x52	0x52
192.168.128.79	0x14 - Device ID/Name	KSFEnganghaus 1	0x5F	0x53
192.168.128.79	0x4C - Login OK	[...]	0x54	0x54
192.168.128.79	0x0A - System idle - V8.6/V3.5 (V5.9)	[...]	0xAE	0x55
192.168.128.79	0x14 - Device ID/Name	KSFEnganghaus 1	0x52	0x56
192.168.128.79	0x4C - Login OK	[...]	0x57	0x57
192.168.128.79	0x0A - System idle - V8.6/V3.5 (V5.9)	[...]	0x51	0x58
192.168.128.79	0x14 - Device ID/Name	KSFEnganghaus 1	0x55	0x59

Enter the IP for your Baudisch module into the tool and connect it with „Setup“ as Unlock.

The Authentication Code has to be identical with the Code for remote authentication (default: 1234) and the Destination/Listening Port have to match their counterpart within the Expert Configuration (Listening Port = Status port, Destination Port = Remote port).

FIRMWARE UPGRADE MANUAL

BAUDISCH SIP DOORMODULE PLUS/MAXI/ECO
SIP RELAYMODULE MAXI/ECO
DOORCONTROLLER 600

The screenshot shows the 'Expert configuration' interface for Baudisch SIP. The top bar includes 'Baudisch SIP', a logo, and 'Firmware 063035 V8.6/V3.5 (V5.9) MAC 00-50-C2-29-F7-76'. Below the bar is a navigation menu with 'Back to menu', 'Expert configuration', and 'Saved!'. The main menu includes 'Network', 'Call destinations', 'Relays', 'SIP', 'SIP Advanced', 'Communication', and 'System'. The 'Relays' tab is selected, showing a 'Status / remote' section. It contains the following fields and controls:

Field	Value	Default / Note
Code for remote authentication	1234	(0123456789*)
IP-address UDP status messages	255.255.255.255	(Broadcast: 255.255.255.255)
Status port (transmit)	8112	(1025..65534)
Remote port (receive)	8113	(1025..65534)
Status	On	Toggle switch
Remote control	On	Toggle switch

Enable Status and Remote control and configure the IP-address for UPD status messages as the IP of your PC. (this is the „Loxone Miniserver Address“ if you are upgrading from Loxone Firmware).

The default setting for status messages is Broadcast, which will often get blocked or filtered by other network components. This can be used without any problems in case the SIP Remote Control can receive any status messages while it is still on Broadcast.

If you aren't certain which IP address your PC uses open a console window and enter "ipconfig", use the first IPV4 address displayed. You may need to scroll upwards a bit. For problems regarding IP address and subnet please contact your administrator.

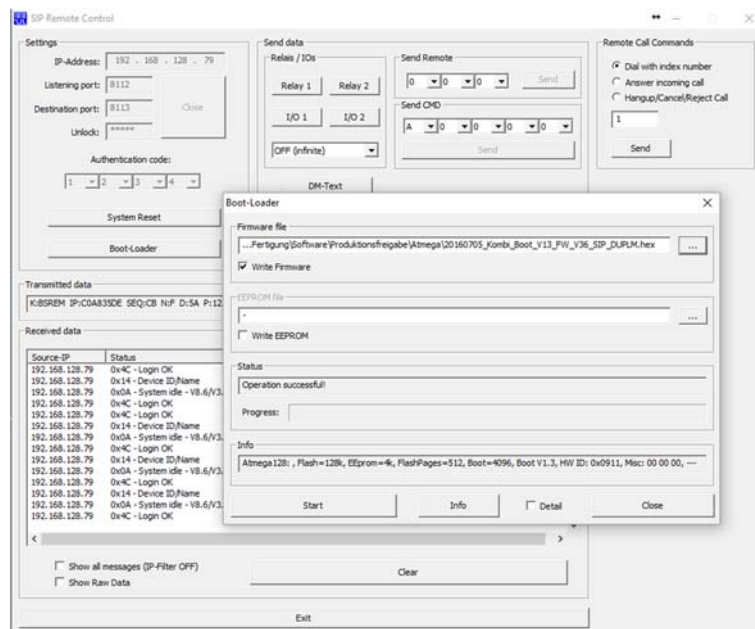
Now toggle "Open" in SIP Remote Control, you should receive status messages.

FIRMWARE UPGRADE MANUAL

BAUDISCH SIP DOORMODULE PLUS/MAXI/ECO
SIP RELAYMODULE MAXI/ECO
DOORCONTROLLER 600

3. AVR FIRMWARE UPDATE

Toggle “Boot-Loader” in SIP Remote Control.



Navigate to the update package's location and select the .hex file.

Check the box for „Write Firmware“.

Toggle “Start”.

The AVR Firmware Update is in progress as soon as you see a blue progress bar.

You can relax for approximately 15 minutes (this can vary, depending on the network connection e.g. WLAN). If the update doesn't start check the settings for SIP Remote Control and the Baudisch module, if you are receiving status messages as shown in the above picture, the tool isn't blocked by firewall or antivirus and if you are within the same subnet and not behind a NAT-router.

If everything else fails, please contact support@baudisch.com

After a successful update and restart you will see the new AVR firmware displayed on web interface and status messages.

FIRMWARE UPGRADE MANUAL

BAUDISCH SIP DOORMODULE PLUS/MAXI/ECO
SIP RELAYMODULE MAXI/ECO
DOORCONTROLLER 600

4. DSP FIRMWARE UPDATE

Enter the IP address of your Baudisch device in a web browser.

Select Update on the start page.



Select "Firmware".

Click Update File -> "Datei auswählen" and navigate to the extracted update package folder.

There select the .bin file.

Now click on "Upload File".

As soon as the web interface is available again and shows the new DSP version (here V8.6), your Update is completed.

You may have to reload the page with F5, open a new tab or restart the browser to see the changes.

5. CONCLUDING REMARKS

IMPORTANT FOR LOXONE CONNECTION – configure the IP address for Miniserver/Status Messages, we changed in section 2, back to its original target.

Restart your firewall and antivirus.

Put your PC's IP back on default if you had to change it.

Turn off Expert Configuration -> System -> Remote Control if you want it disabled.